



The Future of Art

The Rise of Artificial intelligence in Art

**What do you think of
when you hear AI art?**



The background is a dark blue color with several abstract, colorful shapes. On the left, there is a pink circle with diagonal stripes. On the right, there is a red shape with a teal dotted pattern. At the bottom left, there is a yellow shape with a dotted pattern. At the bottom right, there is a yellow and orange striped shape. The text "Deep Learning Mode" is centered in white, bold, sans-serif font.

Deep Learning Mode

What is AI art?

Artificial intelligence art is any artwork, particularly images and musical compositions, created through the use of artificial intelligence (AI) programs,

The background is a dark blue field with several large, overlapping, organic shapes in yellow, teal, pink, and red. Some of these shapes have patterns: a pink circle with a white dot pattern in the top right, and a pink and teal striped circle in the bottom left.

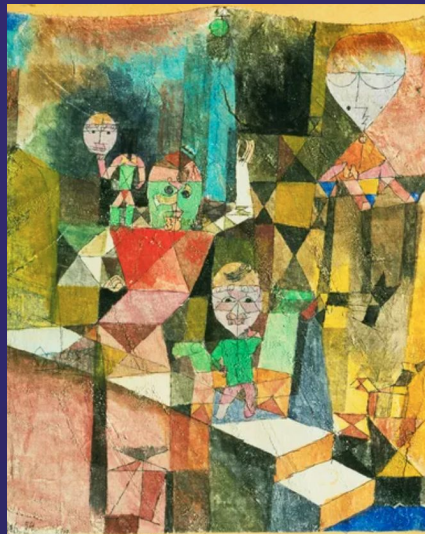
How do AI programs create art?

(deep learning algorithms and text-to-image models)

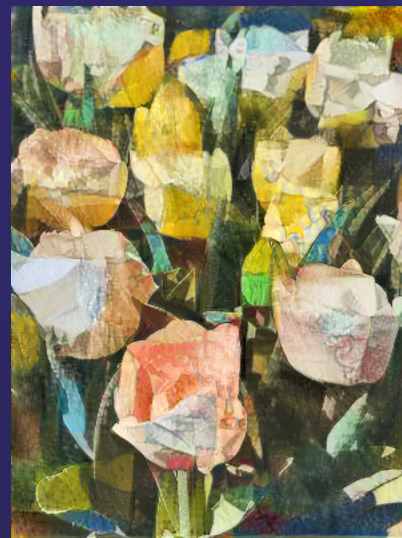
Image merge



+



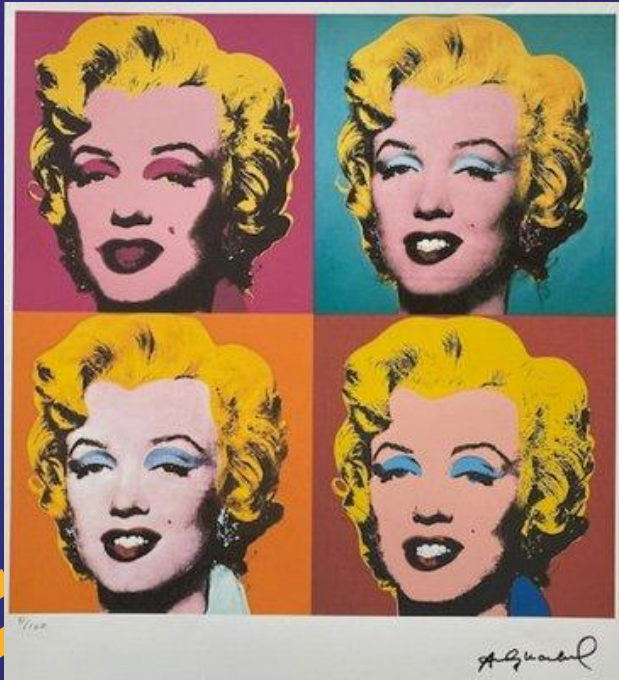
=



Kahinde Wiley



Andy Warhol



Michelangelo



Jeff Koonz



Robot Artist



A dark blue background with abstract, colorful shapes. On the left, a pink circle with diagonal stripes. On the right, a teal shape with a dotted pattern and a red shape. At the bottom, a yellow shape with a dotted pattern and a teal shape with diagonal stripes.

Beta Testing

Alexander Mordvintsev



Deep Dream

Pikazo



Pikazo.

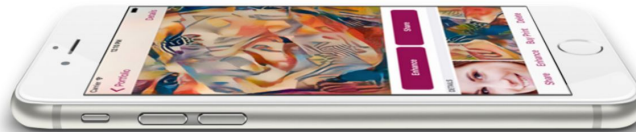
[Order Prints](#)

[Contact Us](#)

JOIN THE ART WORLD, NO BERET NEEDED.

Find it. Merge it. Feed your art addiction!
Pikazo uses AI to combine any two images into a new work of art.

IOS



Night Café

Start Creating AI Art on NightCafe Now →

NightCafe

[Home](#) [Create](#) [About](#) [Blog](#)



AI Art Generator

Create beautiful art in seconds with the help of
Artificial Intelligence

START CREATING

The background is a dark blue color with several abstract, overlapping shapes. On the left, there is a pink circle with diagonal stripes. On the right, there is a red shape with a teal dotted pattern. At the bottom left, there is a yellow shape with a dotted pattern. At the bottom right, there is a teal shape with diagonal stripes. The text "Human vs. Machine" is centered in white, bold, sans-serif font.

Human vs. Machine

Sculpture

Representational



"Rockit Black"
by
Tanda Francis

Abstract



"Wingman"
by
Mike Conlen

Midjourney

